

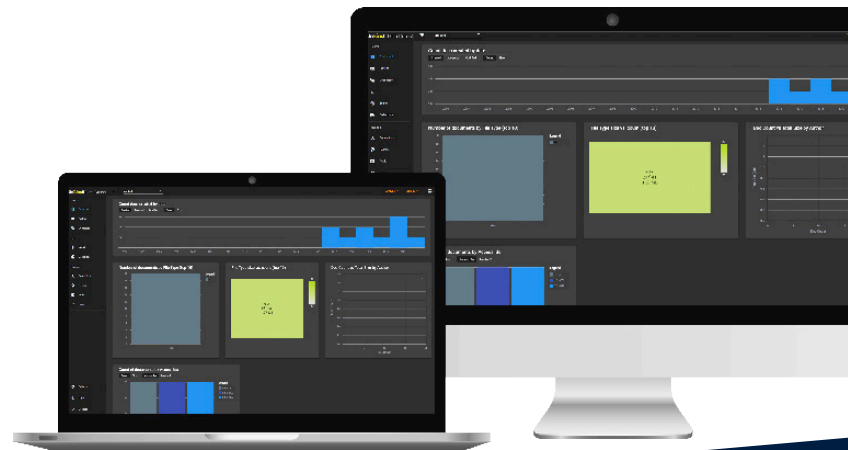
Zantaz Discovery

The Challenge

Legal, compliance, and enterprise risk teams are challenged to streamline and simplify their eDiscovery workflow due to the variety, volume, and velocity at which enterprise data is being created. Managing a high volume of litigation is a fact of life for corporate counsel in most organizations today. With increasing data volumes and broader governance requirements across all enterprise data, the time required and cost of gathering, culling, and reviewing the responsive matter for electronic discovery has risen exponentially. IT support is burdened to find and restore the data, while outside law firms log large quantities of hours to review the often overwhelming volume of emails, files, etc. that have been tagged for review. As a result, companies find that they spend an inordinate amount of money for outside counsel and that the lengthy collection phase wastes precious time and limits the legal team's ability to assess the merits of a case. The volume and redundancy of the data, coupled with the need to involve multiple partners and vendors to cull and review the information, make containing litigation support costs and ensuring "litigation readiness" increasingly difficult.

The Solution

Zantaz Discovery automates the collection, preservation, and filtering of corporate data for eDiscovery; provides immediate access to corporate email, files, IM, social media and more, across all geographic locations. EAS is the one-stop solution to confidently address these challenges, while also eliminating redundant data searches and reducing the risk of errors and spoliation. In addition to reducing discovery costs, EAS Discovery reduces the time it takes to access email and any source of enterprise data and bolsters your legal team's ability to quickly assess the merits of a case before going into a full-blown legal process. EAS Discovery is trusted by highly litigious and regulated Fortune 500 companies, AM 100 Law Firms, and government agencies across the globe to begin their eDiscovery collections process.



Powerful Enterprise Search Capabilities

Enterprise-wide search across 100,000+ custodians can quickly be culled and refined using several filtering and search options. eDiscovery professionals can structure advanced boolean queries to include, proximity searches, addressing, wildcards, standard [content, date range, and to and from] criteria. Boolean expressions can even be built in our Advanced Search Builder which provides a user-friendly interface that allows users to add a virtually unlimited amount of search terms and eDiscovery operators, which automatically generates a historically complex search query in perfect boolean syntax.

Advanced Tagging and Review

Administrators are able to create global system tags that our regularly used as well as custom tags for your specific case. EAS Discovery provides feature-rich assignments and pre-review capabilities to apply tags and ensure the most accurate data set has been collected before exporting into upstream review platforms.

Intuitive Built-In Workflow for Seamless Multi-Department Review

The intuitive built-in workflow empowers end-users from various departments to collaborate and execute on collective Discovery actions to cull down information; streamlining your early case assessment with specific responsibilities being allocated to different members of your eDiscovery and IT team.

Dedicated Role-Based Access Controls for Search, Review, and Export Entitlements

EAS Discovery allows administrators to maintain full control and security over the eDiscovery process, by ringfencing users to specific permissions which are commonly required by corporate policy, or to ensure a case can not be corrupted by users making a change in a different part of the application they are not trained on.

Granular Export Capabilities

When your team is ready to export the data from EAS Discovery for upstream review, granular export capabilities offer users the ability to perform bulk or per custodian exports, export to pst. and customized EDRM formats, as well as tag and review-based exports.

